

S.T.M.B.



C
o
n
s
t
r
u
c
t
i
o
n

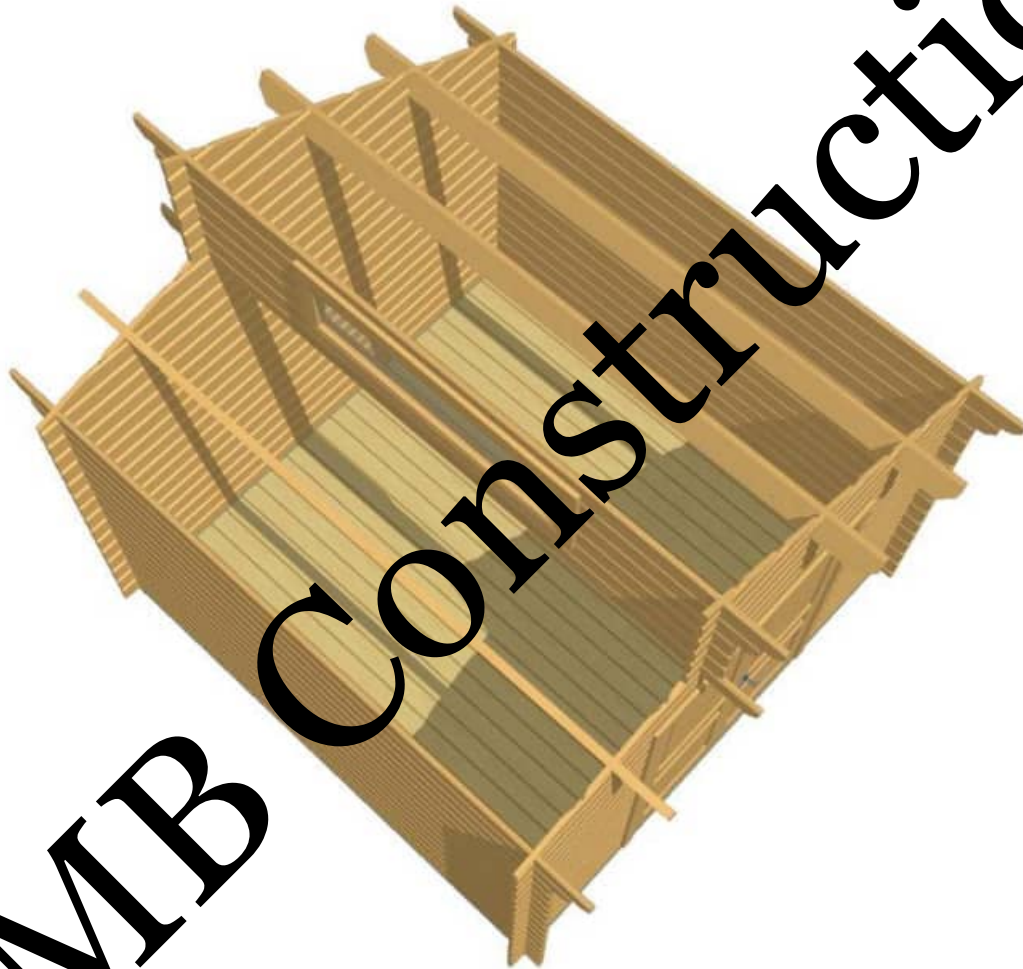


STMB Construction

28mm Osaka 3,2x3,2

	Epaisseur:	Type:	Nom	No:	Date:	Page:
	28mm	Standard	Osaka 10.24	#PIn	2025	1

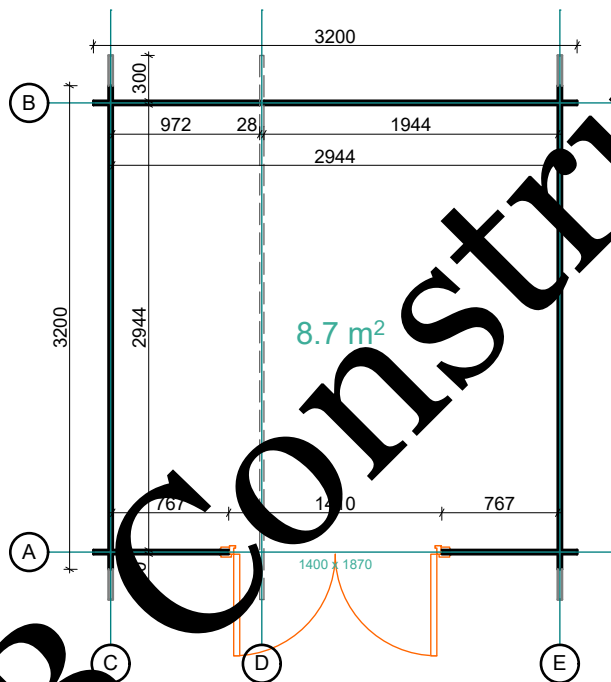
STMB Construction



	Epaisseur:	Type:	Nom:	No:	Date:	Page:
	28mm	Standard	Osaka 10.24	#PIn	2025	2

REZ-DE-CHAUSSÉE

1:50



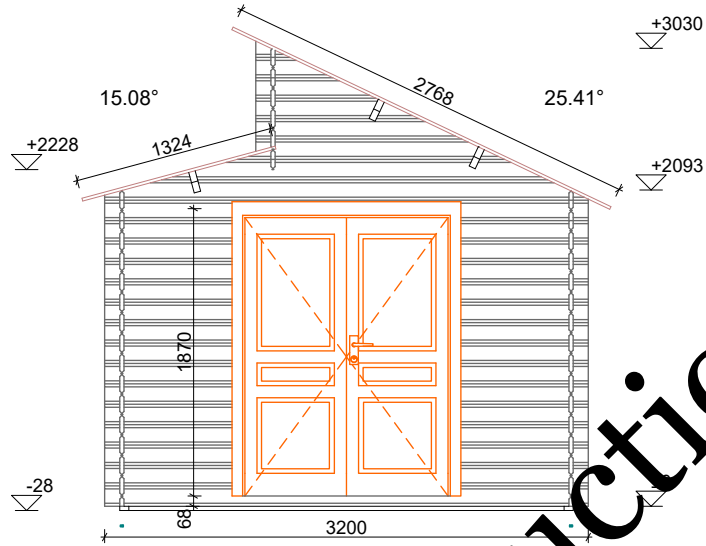
STMB Construction

	Epaisseur:	Type:	Nom:	No:	Date:	Page:
	28mm	Standard	Osaka 10.24	#PIn	2025	3

AVANT

ELEVATION

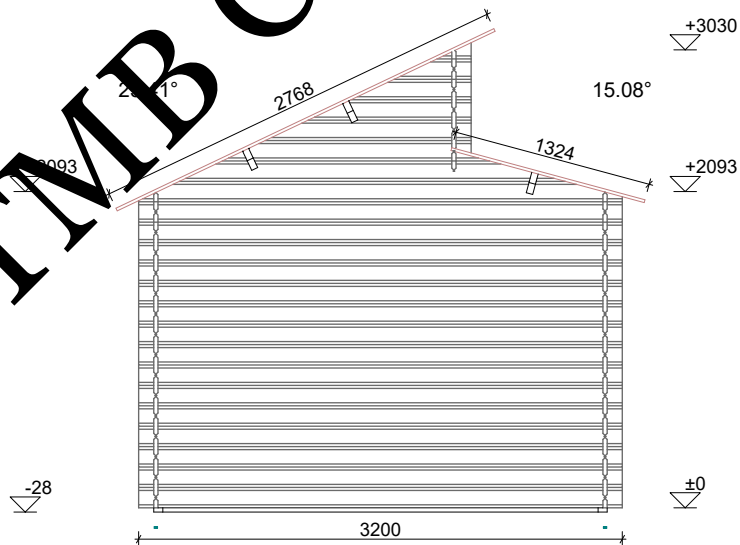
1:50



ARRIÈRE

ELEVATION

1:50



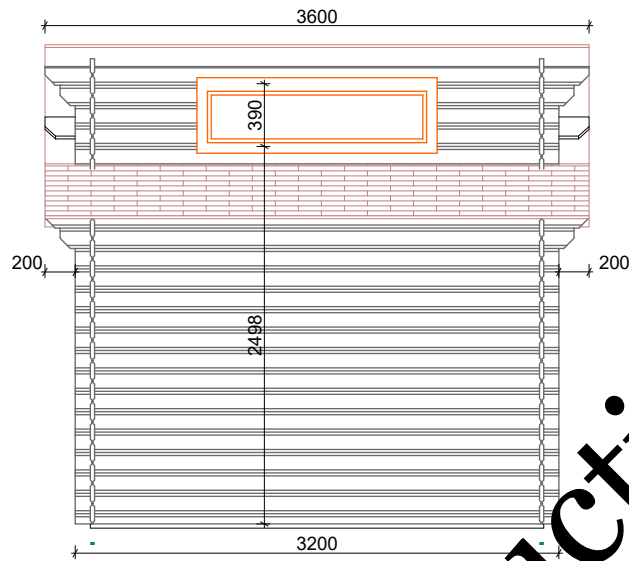
STMB Construction

Epaisseur:	Type:	Nom:	No:	Date:	Page:
28mm	Standard	Osaka 10.24	#Pln	2025	4

GAUCHE

ELEVATION

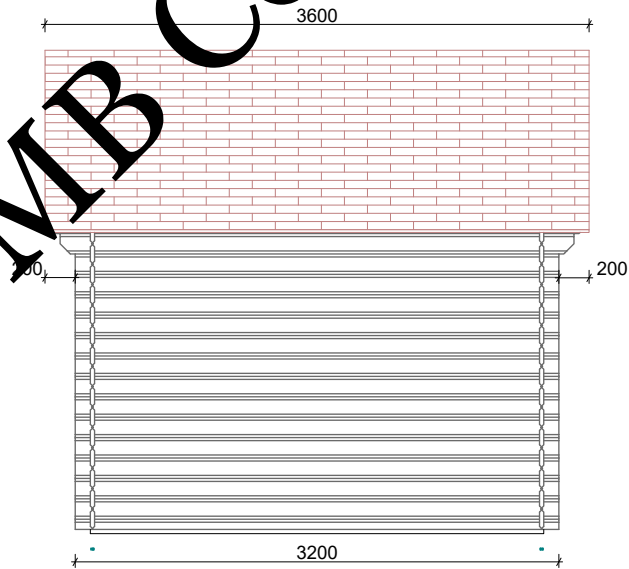
1:50



DROITE

ELEVATION

1:50

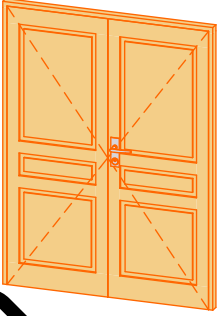
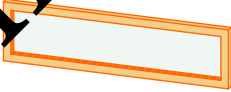


STMB Construction

Epaisseur:	Type:	Nom:	No:	Date:	Page:
28mm	Standard	Osaka 10.24	#PIn	2025	5

LISTE PORTE & FENÊTRE

28mm Osaka 3,2x3,2

Type	Qualité	Dimensions	Orient.	Vitrage	Qt	3D
Porte	Economique	1400x1870	R	Pleine	1	
Fenêtre	Economique	1500x390	R	Fixe simple	1	

STMB Construction

Epaisseur:	Type:	Nom:	No:	Date:	Page:
28mm	Standard	Osaka 10.24	#PIn	2025	6